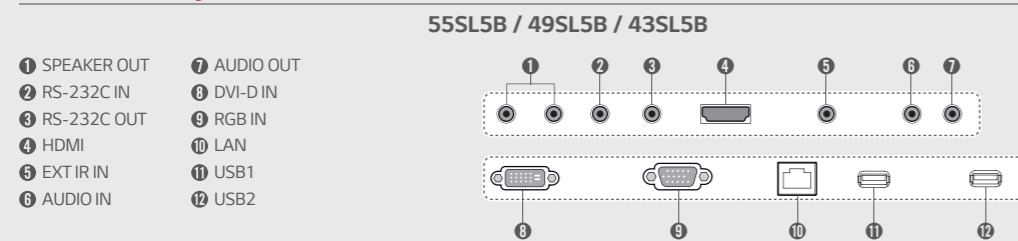


Specifications

SL5B Series	55SL5B	49SL5B	43SL5B	
PANEL	Screen Size	55	49	43
	Panel Technology	IPS		
	Aspect Ratio	16 : 9		
	Native Resolution	1,920 x 1,080 (FHD)		
	Brightness	450cd/m ²		
	Contrast Ratio	1,100:1		
	Dynamic CR	500,000 : 1		
	Viewing Angle (H x V)	178 x 178		
	Response Time	12ms (G to G BW), 9.0ms (WOT)	12ms (G to G BW), 10.1ms (WOT)	12ms (G to G BW), 9.4ms (WOT)
	Surface Treatment	Hard coating (3H), Anti-Glare Treatment of the Front Polarizer (Haze 1%(Typ.))		
Guaranteed Operating Hour	18 Hours			
CONNECTIVITY	Orientation	Portrait & Landscape		
	Input	HDMI, DVI, RGB, Audio, USB (2)		
	Output	Audio, External Speaker Out		
PHYSICAL SPECIFICATION	External Control	RS232C In/Out, RJ45 In, IR Receiver In		
	Bezel Color	Black		
	Bezel Width	11.9mm (T/R/L), 18mm (B)	11.9mm (T/R/L), 18mm (B)	11.9mm (T/R/L), 18mm (B)
	Monitor Dimensions (W x H x D)	1,238 x 714.9 x 38.6mm	1,102.2 x 638.5 x 38.6mm	969.6 x 563.9 x 38.6mm
SPECIAL FEATURES	Weight (Head)	17.3kg	14.1kg	9.8kg
	Weight (Head + Stand)	20.6kg	17.4kg	12.3kg
	Monitor with Optional Stand & Speaker Dimensions (W x H x D)	1,238 x 773.4 x 219.6mm	1,102.2 x 696.8 x 219.6mm	969.6 x 622.2 x 193mm
	Weight (Head+Stand+Speaker)	21.1kg	17.9kg	12.8kg
	Carton Dimensions (W x H x D)	1,330 x 807 x 170mm	1,197 x 760 x 166mm	1,052 x 650 x 123mm
	Packed Weight	21.5kg	17.2kg	12.4kg
	VESA™ Standard Mount Interface	300 x 300mm	300 x 300mm	200 x 200mm
	USB Content Scheduling, Conformal Coating, SNMP Support, Wi-Fi Ready (Dongle), Power Management modes (Sustain Aspect Ratio/Stand-by Screen, etc.), No Signal Image setting, Enhanced ISM (Image Sticking Minimization) Mode, Holiday Schedule/Local Time Auto Setting, Fail-over (USB, RGB, DVI, HDMI), Wake on LAN			
ENVIRONMENTAL CONDITIONS	Operating Temperature range	0 °C to 40 °C	0 °C to 40 °C	0 °C to 40 °C
	Operating Humidity range	10 % to 80 %	10 % to 80 %	10 % to 80 %
POWER	Power Supply	100-240V~, 50/60Hz		
	Power Type	Built-In Power		
POWER CONSUMPTION	Typ.	85W	75W	65W
	Smart Energy Saving	65W	55W	50W
STANDARD (CERTIFICATION)	Safety	UL / cUL / CB / TUV / KC		
	EMC	FCC Class "A" / CE / KC		
	ErP / Energy Star	N/A / Yes (Energy Star 7.0)		
MEDIA PLAYER COMPATIBILITY	OPS type compatible	No	No	No
	External Media Player Attachable	Yes (MP500/MP700)	Yes (MP500/MP700)	Yes (MP500/MP700)
SOFTWARE COMPATIBILITY	Content Management Software	SuperSign W		
	Control and Monitoring Software	SuperSign C		
ACCESSORY	Basic	Basic Remote Controller (2ea Batteries Included), Power Cord, QSG, RGB Cable, Regulation Book, Phone to RS232C Gender, IR Receiver		
	Optional	Speaker (SP-5000), Stand (ST-492T), Media Player, Wall Bracket (LSW350B), VESA Adapter (AM-B330S), Touch Overlay (KT-T550), Wi-Fi Dongle (AN-WF500)	Speaker (SP-5000), Stand (ST-492T), Media Player, Wall Bracket (LSW350B), VESA Adapter (AM-B330S), Touch Overlay (KT-T490), Wi-Fi Dongle (AN-WF500)	Speaker (SP-5000), Stand (ST-432T), Media Player, Wall Bracket (LSW230B), VESA Adapter (AM-B220S), Touch Overlay (KT-T430), Wi-Fi Dongle (AN-WF500)

Connectivity



Download LG Commercial Display Mobile App



- www.lg.com/b2b
- youtube.com/LGCommercialDisplay
- https://www.facebook.com/LGInformationDisplay/
- https://www.linkedin.com/company-beta/16235211/

LG may make changes to specifications and product descriptions without notice.
Copyright © 2018 LG Electronics Inc. All rights reserved. "LG Life's Good" is a registered trademark of LG Corp.
The names of products and brands mentioned here may be the trademarks of their respective owners.



Display Solution to provide Superior Viewing Experience Standard Essential SL5B Series



The LG SL5B Series is designed especially for better brightness for the spaces require strong illumination with its sharp and clear images for example fashion boutiques and galleries. This series has a practical design with a slimmer bezel and depth for optimum space utilization.

Key Features

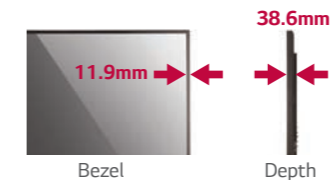
Enhanced Design Configuration



Slim

Slimmer Bezel & Depth

The thinner bezel & depth allows a perfect fit for a sleek look.



Bezel

Depth

Detachable Logo

Portrait mode allows the logo to be positioned in the desired setting.



Cable Management

The well-organized cable terminals in the back optimize available space.



USB Content Management



USB Content Scheduling

Play and schedule contents with a USB connection-no server connection required.



*Supported Content Type : Video (MPEG1/2/4, H.264), Audio (MP3, AC3, MPEG, AAC, HEAAC, LPCM), Image (JPEG, PNG, BMP)

Dust & Humidity Protection



Conformal Coating

Circuit board reliability is enhanced with conformal coating that protects against dust, iron powder, humidity and other harsh conditions.



Display Solution to provide Superior Viewing Experience

Standard Essential SL5B Series



Screen Sizes
55"/49"/43"

SL5B Series

- Brightness : 450cd/m²
- Bezel : Top/Left/Right 11.9mm, Bottom 18mm
- Depth : 38.6mm
- Interface : HDMI / DVI / RGB / RJ45 / USB(2) / RS232C

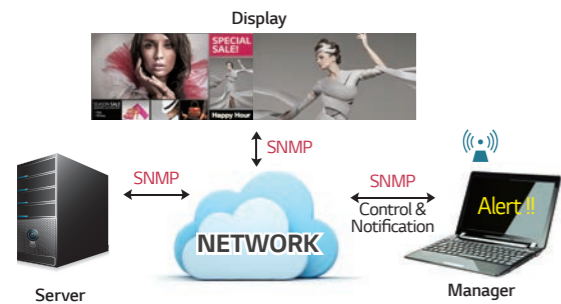


Other Features

Remote Management

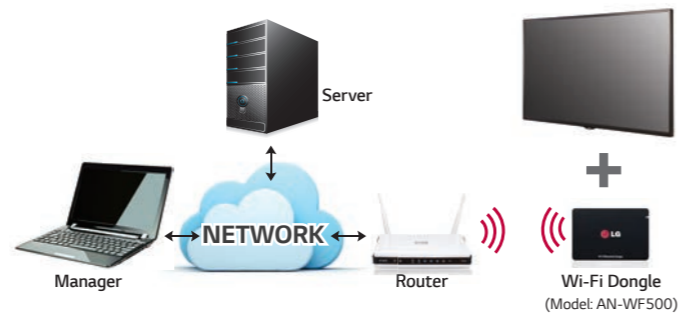
Simple Network Management Protocol

SNMP support ensures convenient network management.



Wi-Fi Support

SL5B Series support Wi-Fi USB dongle connection for convenient content distribution.



Convenient Screen Mode

Aspect Ratio Sustainability*

Sustain the same resolution and picture quality while powering on/off by receiving EDID¹⁾ through switch IC.



1) Extended Display Identification Data.
* Installation Menu > LG Digital Signage > PM Mode

Stand-by Screen*

Even without signal from the media player, the network does not turn off completely, so remote control is possible, which prevents unnecessary power usage and enables efficient management.



Scheduled Screen Wash**

Prevent residual images with the screen transition feature.

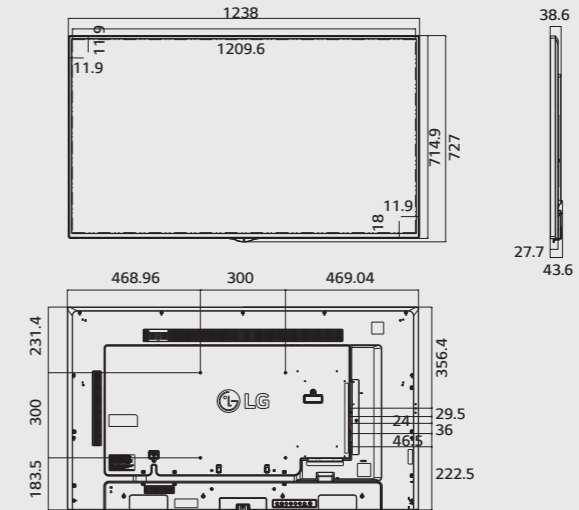


** Installation Menu > ISM Method

Dimension (unit : mm)

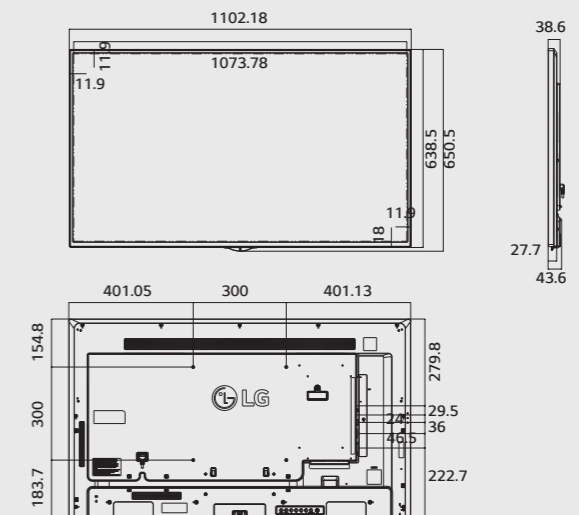
55"

1,238 x 714.9 x 38.6 /
17.3kg



49"

1,102.2 x 638.5 x 38.6 /
14.1kg



43"

969.6 x 563.9 x 38.6 /
9.8kg

